

REPLAT OF LOTS 1, 2, 3, 4, AND TRACT "B" TOGETHER WITH LOTS 17, 18, AND 19, BEING PORTIONS OF THE PLAT OF MARINA BAY

AS RECORDED IN PLAT BOOK 10 PAGE 36, PUBLIC RECORDS OF MARTIN COUNTY, FLORIDA.
OCTOBER 1987.

STATE OF FLORIDA
COUNTY OF MARTIN SS.

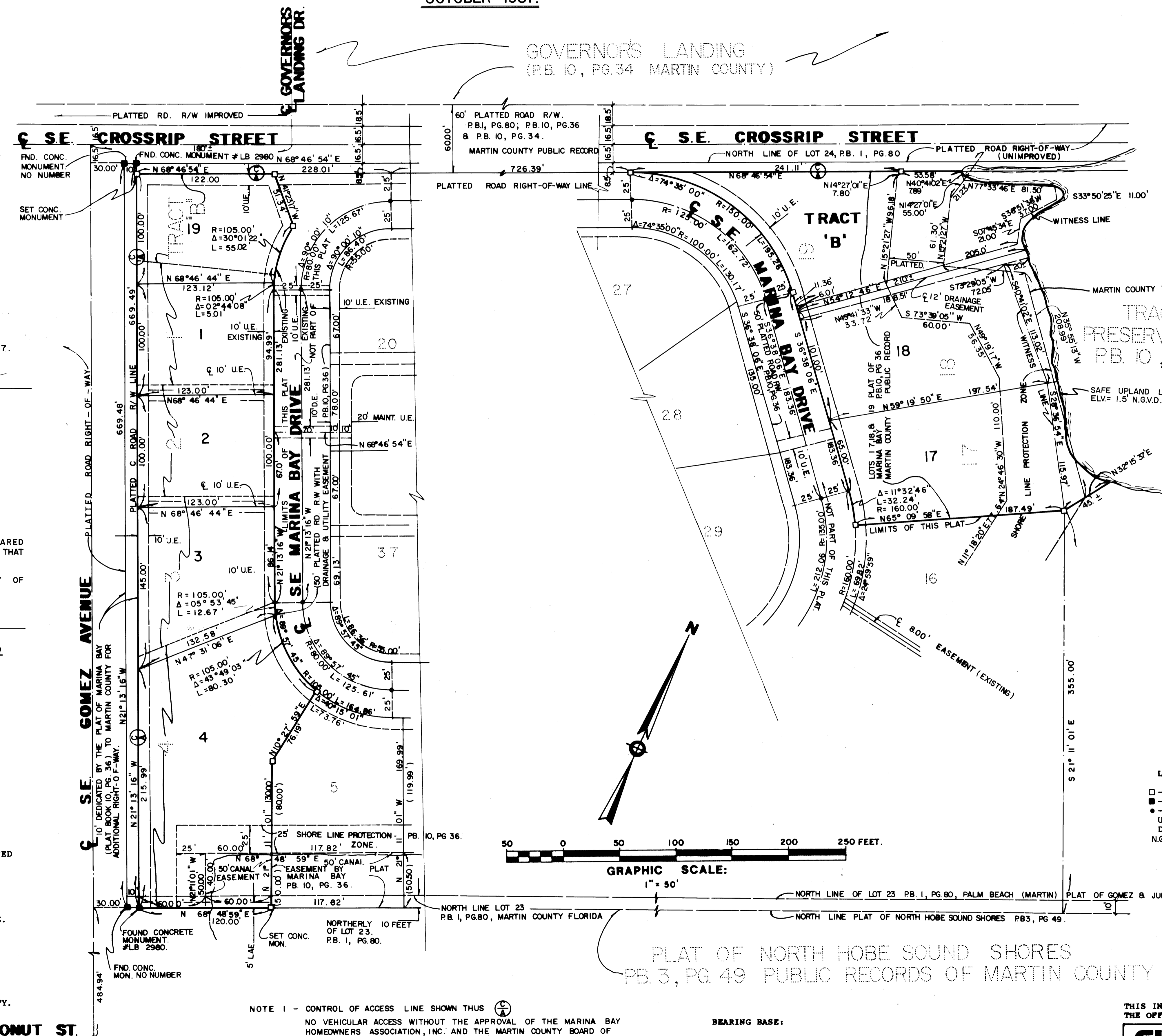
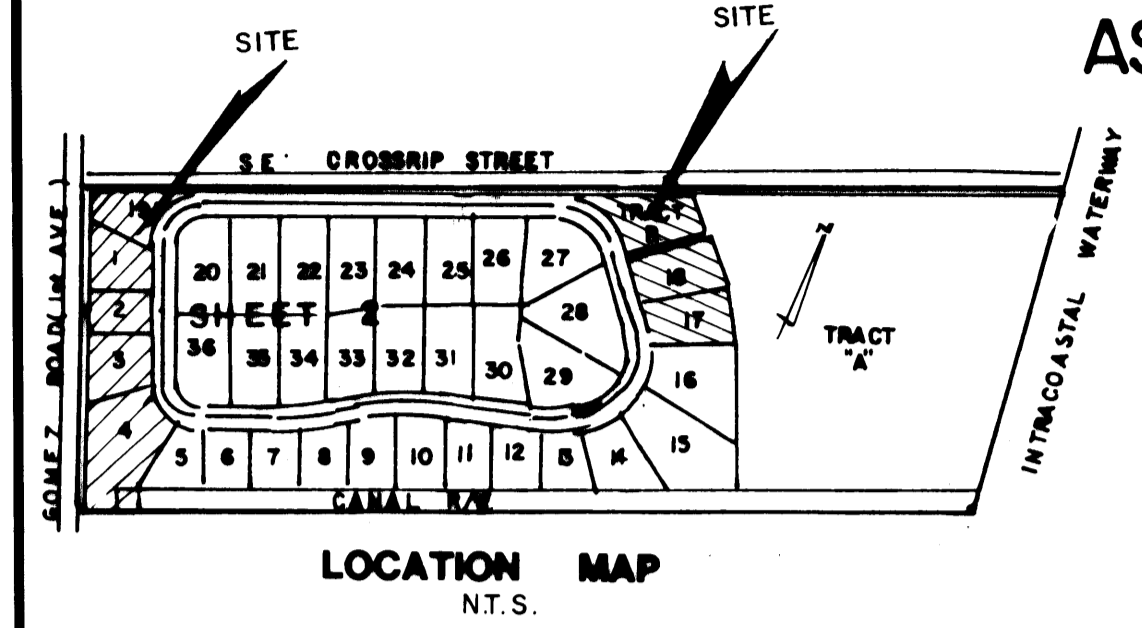
CLERK'S RECORDING CERTIFICATE

MARSHA STILLER, CLERK OF THE
CIRCUIT COURT OF MARTIN COUNTY,
FLORIDA, HEREBY CERTIFY THAT
THIS PLAT WAS FILED FOR RECORD IN
PLAT BOOK

11, PAGE 16
MARTIN COUNTY, FLORIDA, PUBLIC
RECORDS, THIS DAY OF
1988.

MARSHA STILLER,
CLERK
CIRCUIT COURT
MARTIN COUNTY, FL
BY: DEPUTY CLERK

FILE NO. _____



ADDENDUM TO DEDICATION

SIGNED AND SEALED THIS 22nd DAY OF Dec. 1987.

Sam W. Mays
SAM MAYS.

ACKNOWLEDGEMENT

STATE OF GEORGIA
COUNTY OF _____ S.S.

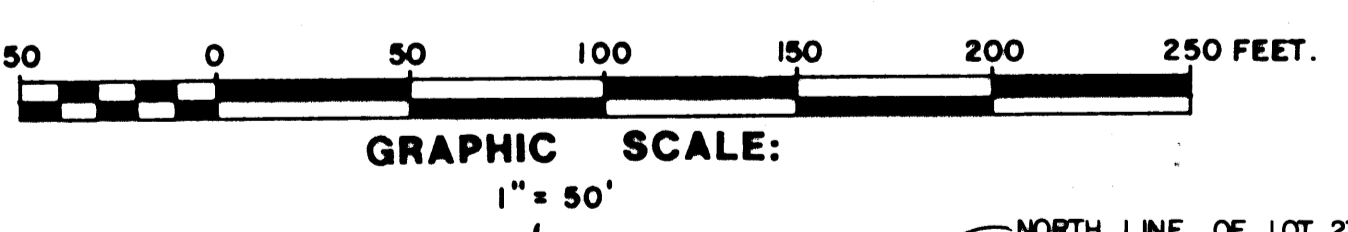
BEFORE ME THE UNDERSIGNED NOTARY PUBLIC, PERSONALLY APPEARED
SAM MAYS, TO ME WELL KNOWN AND WHO ACKNOWLEDGEMENT THAT
HE EXECUTED SUCH INSTRUMENT.

WITNESS MY HAND AND OFFICIAL SEAL THIS 22nd DAY OF
Dec. 1987.

Loretta C. Brqwell
NOTARY PUBLIC
STATE OF GEORGIA, AT LARGE
MY COMMISSION EXPIRES: 7-9-90

- RESERVATIONS
- NO BUILDINGS OR ANY KIND OF CONSTRUCTION SHALL BE PLACED ON DRAINAGE EASEMENTS.
 - NO STRUCTURES, TREES OR SHRUBS SHALL BE PLACED ON DRAINAGE EASEMENTS.
 - APPROVAL OF LANDSCAPING ON UTILITY EASEMENTS SHALL BE ONLY WITH THE APPROVAL OF ALL UTILITIES OCCUPYING SAME.
 - WHERE DRAINAGE AND UTILITY EASEMENTS CROSS, DRAINAGE EASEMENTS SHALL TAKE PRECEDENT.
 - BUILDING SETBACK LINES SHALL BE AS REQUIRED BY MARTIN COUNTY ZONING REGULATIONS.
 - SHORE LINE PROTECTION ZONE DEVELOPMENT SHALL BE IN ACCORDANCE WITH THE COMPREHENSIVE PLAN OF MARTIN COUNTY.

NOTE 1 - CONTROL OF ACCESS LINE SHOWN THUS NO VEHICULAR ACCESS WITHOUT THE APPROVAL OF THE MARINA BAY HOMEOWNERS ASSOCIATION, INC. AND THE MARTIN COUNTY BOARD OF COUNTY COMMISSIONERS.



- LEGEND:
- - P.R.M. DENOTES PERMANENT REFERENCE MONUMENT (SET).
 - - P.R.M. DENOTES PERMANENT REFERENCE MONUMENT (FOUND).
 - - P.C.P. DENOTES PERMANENT CONTROL POINT (FOUND).
 - U.E. DENOTES UTILITY-EASEMENT
 - D.E. DENOTES DRAINAGE EASEMENT
 - N.G.V.D. - DENOTES NATIONAL GEODETIC VERTICAL DATUM.

PLAT OF NORTH HOBE SOUND SHORES
PB. 3, PG. 49 PUBLIC RECORDS OF MARTIN COUNTY

THIS INSTRUMENT PREPARED BY
THE OFFICE OF:

SHALLOWAY
ENGINEERS, PLANNERS, SURVEYORS
FLORIDA PROFESSIONAL ENGINEERS AND SURVEYORS

DATE 8-18-87 S 2
DRAWN A.R. H 2
CHECKED G.R. T 2

JOB NO. 84064

BEARING BASE:
BEARINGS SHOWN HEREON ARE BASED ON THE BEARING STRUCTURE OF THE PLAT OF MARINA BAY AS RECORDED IN PLAT BOOK 10, PAGE 36, MARTIN COUNTY, FLORIDA.

SE COCONUT ST.